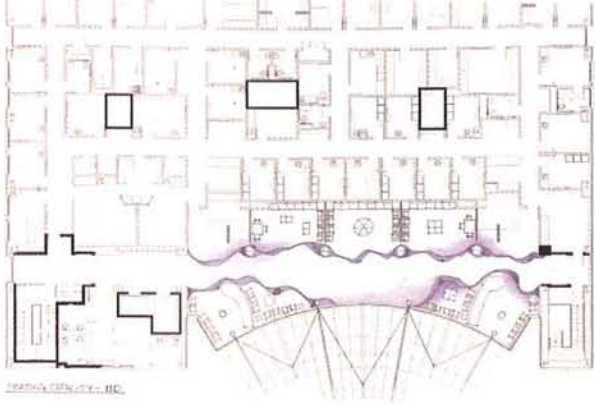


contract

inspiring commercial design solutions october 2005

Children's Hospital of Philadelphia by
Karlsberger & Associates and Kohn Pederson Fox
Healthcare

William Beaumont Hospital by HarleyEllis, HOK,
Watkins Hamilton Ross and Grissim Metz Andriese Associates
Broadloom Carpet
Finding a Partner
Healthcare Environment Awards



Ambulatory Care winner

Project: Mary Bridge Children's Health Center

Location: Tacoma, WA

Designer: Bainbridge Design, Giffen/Bolte/Jurgens Architects,
MultiCare Health Systems

Photographer: Pete Eckert

Designed by Portland, Ore.-based Bainbridge Design, Mary Bridge Children's Health Center is a three-story, 62,000-sq.-ft. expansion including reception and visitor waiting areas, children's activity areas, pharmacy, five pediatric clinics (designed by MultiCare Health Systems), a gift shop, and bistro. Mary Bridge's Pacific Northwest theme includes natural light, open space, and commissioned artwork that's both tactile and engaging. Bainbridge Design was charged with ensuring that the facility foster a sense of humor and spark discovery and imagination while also maintaining a sophisticated look. "The environment is a sensitive combination of a playful, child friendly atmosphere and a calming, nature-oriented space," says Madlyn Murrey, RN, MN, administrator and nurse executive at Mary Bridge Children's Hospital and Health Center.

For each floor, a concept of sea, earth, and sky was developed. The custom glass tile mosaic shoreline handles the transition between hard surface flooring and carpeted seating areas. Animal icons assist wayfinding. Custom tiles on reception desks continue these themes and provide tactile interest on the child's level. Rich wood paneling warms the waiting spaces and complements the cooler colors of upholstery, flooring, and carpeting. Commissioned early in the design process, work by Northwest artists is placed throughout the facility. "When creating a space primarily for children, it is rare to develop elegance, calmness, and playfulness in a single space," says Dr. Nancy Schultz, a hospitalist at MultiCare Health System. "This new building appeals to children of all ages as well as to the child in all of us."

